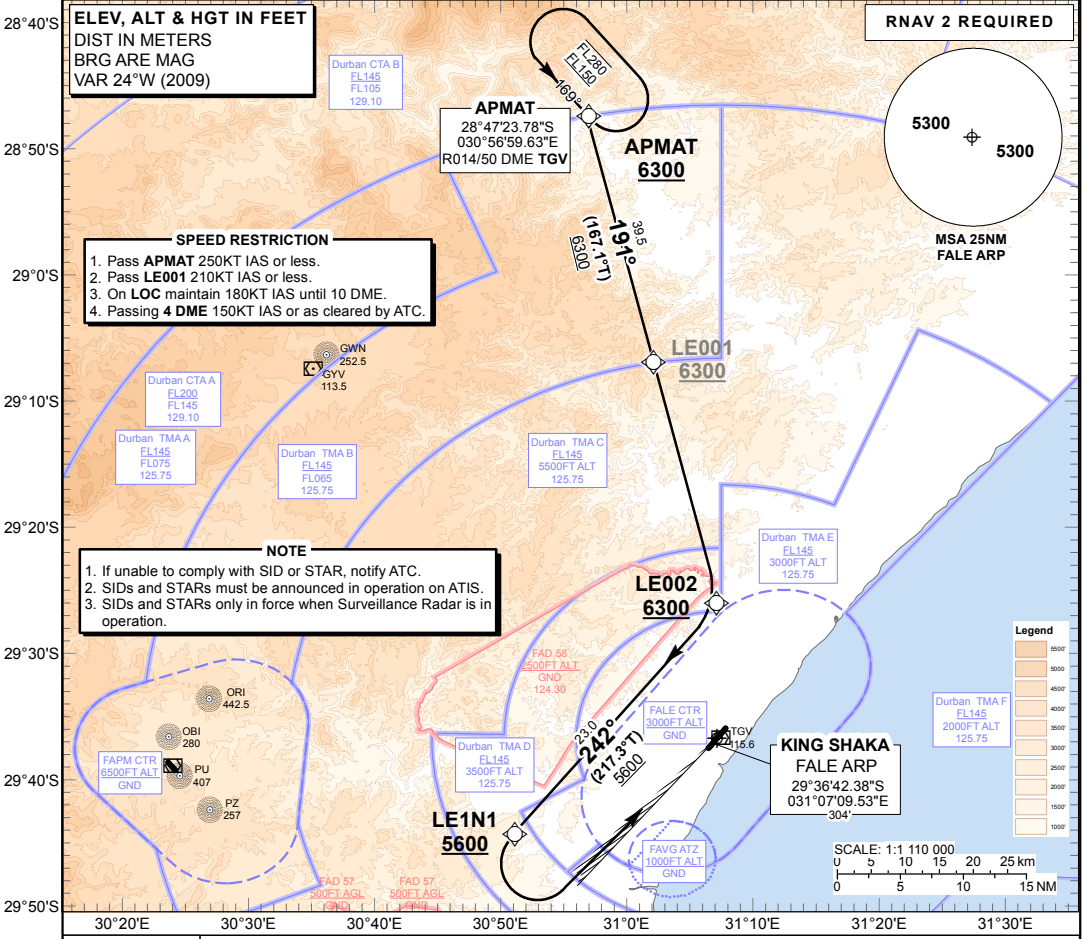


**STANDARD ARRIVAL
CHART -
INSTRUMENT
(STAR)**

TRANSITIONAL ALTITUDE
5500'
TRANSITIONAL LEVEL
ATC

RADAR APP: 125.75
TWR: 118.45
GND: 121.65
ATIS: 127.00

DURBAN
(KING SHAKA INTERNATIONAL)
RNAV (GNSS) RWY 06
APMAT 1A



**APMAT 1A:
RWY 06**

Leave APMAT for LE002. At LE002 turn right for LE1N1. At LE1N1 turn left for radar vectors onto ILS LOC RWY 06.

COMMUNICATION FAILURE PROCEDURE (Squawk 7600)

Before APMAT: Proceed to APMAT and enter the APMAT RNAV (GNSS) hold. Hold at last assigned level, for minimum 5 MIN, then descend to FL130 in the hold or maintain last assigned level if below FL130. Leave APMAT on the "After APMAT" Communication Failure Procedure.

After APMAT: Continue on the APMAT 1A RNAV (GNSS) STAR maintaining last assigned level. Passing LE001 descend to FL080. At LE002 (not below 6300' ALT) turn right to LE1N1 (not below 5600' ALT). Continue with the RNAV (GNSS) RWY 06 APCH to LE1N1 and intercept the ILS LOC RWY 06 and land RWY 06.

In the event of a missed approach with the intention of diverting to an alternate aerodrome, proceed as follows: Comply with the ITMIL IC RNAV (GNSS) SID. At ITMIL continue to the diversion aerodrome.

CHANGE: New Format